

Lavish Lakelands

Day One

AM

No better place to begin your visit than on the lake itself as you embark on a Lakeland adventure. Board your own private Cruiser [The Lady Of The Lake](#) Take a guided tour of Lower Lough Erne, the perfect experience for a great morning out on the lake. Enjoy the views and ease yourself into the relaxing surroundings. You will journey to the ancient monastic site of Devenish Island, where you will disembark and have some time to explore this early Christian settlement. Hosting up to 50 onboard, this can be a wonderful group experience or a very special intimate cruise for two. On-board catering is available, there is a fully licensed bar on board, and tea, coffee and light refreshments can also be served.

Following your Lady of The Lake cruise make your way to Enniskillen's [Killyhevlin Lakeside Hotel & Lodges](#), where you will enjoy the perfect afternoon treat. Here you will indulge in a tantalising Afternoon Tea in the dedicated lake view conservatory. Marvel at the outstanding views over Lough Erne as you indulge in a selection of mouth-watering, homemade treats. Warm fluffy scones, finely cut sandwiches and tempting pastries will fill you with delight - why not add a little sparkle to your afternoon and upgrade to a glass of prosecco!



Lavish Lakelands



Day One

PM

Now fuelled for the afternoon, it's time to immerse yourself in stately grandeur at the stunning [Florence Court Estate](#). This iconic 18th Century house, surrounded by lush parkland and thick woodland, boasts lots to explore. Secure your pre-booked tickets and meander through the picture perfect walled garden as you stop to smell roses and bursts of floral delights at every turn. The landscaped pleasure grounds and Summer House with stunning views over Benaughlin Mountain are a must, as well as a choice of walking trails offering a feast for the senses via woodland wonders and hill top views. Make sure to stop for coffee and a mouth watering tray bake at Lilly Anne's 'Giddy Box' trailer before you leave!



Finish off your day in pure luxury as you check into the 5* [Lough Erne Resort & Spa](#). Indulge in an evening treat as you savour the resort's stunning setting in The Catalina Restaurant, Northern Ireland's 3 AA Rosette Hotel Restaurant. After dinner enjoy a walk around the stunning grounds as you take in views across the [Faldo Golf Course](#) and out over Lough Erne, or the new [Enchantment](#) Woodland Trail, where magic awaits around every corner.

Retreat to the Blaney Bar for drinks before heading to your luxury room for 5* night sleep.



Lavish Lakelands

Day Two

AM

Wake up in luxury to a delicious breakfast before retreating to the idyllic [Thai Spa](#). Indulge in pure bliss with treatments by Thai therapists who originate from and are expertly trained in Thailand, using Traditional Thai Therapies and Thai-made Lau Erb products. Lau Erb will awaken the senses using traditional and natural Thai remedies including herbs, flowers and roots dedicated to the wellbeing of the mind, body and soul—the perfect start to any day!

Renowned for its rich Fermanagh heritage, [Enniskillen Castle](#) will be your first stop of the day. As you enter the walls of Enniskillen Castle you take a step back in time. Built almost 600 years ago by the ruling Gaelic Maguires this fascinating structure guarded one of the few passes into Ulster and has therefore been strategically important throughout its history. Today, the historic site houses two museums, Fermanagh County Museum and The Inniskillings Museum. Its award winning exhibitions cover the prehistory and natural history of Fermanagh, the county's traditional rural life, local crafts and the celebrated pottery at Belleek.

PM

Journey North-West of the county along the scenic Lower Lough for the most spectacular views you have ever seen. You will reach the quaint village of Belleek on the banks of the River Erne. Here you will find the iconic [Belleek Pottery Visitor Centre](#). From the moment you step foot inside Belleek Pottery you will be immersed in the unique history which radiates from this fascinating building. Delve into the renowned past of this iconic company in the Retail Showroom, Museum and Audio Visual Theatre. Make sure to stop by the gift shop for an iconic Fermanagh keep sake to take home.



Lavish Lakelands

Day Two

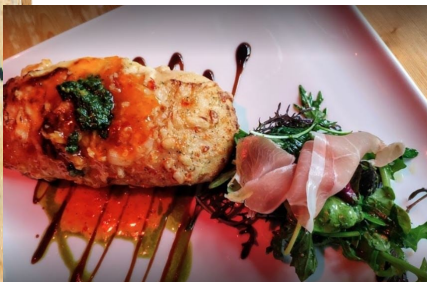
PM

Journey back towards the Island Town and make your way to [Franco's Restaurant](#), run by the Sweeney Family for over 30 years Franco's is a vibrant, buzzing restaurant, with a menu that is sure to excite. It is a must visit for locals and tourists alike.

Retreat to the Lough Erne Resort and toast the Lakelands with a Fermanagh brewed [Boatyard Gin](#) on the terrace.

Final Morning

Receive a warm [Blessingbourne](#) welcome from Lady Mary Montgomery in full Victorian costume, as she introduces you to the Manor House and captivates you with fascinating stories about [Blessingbourne Estate](#). Continue your experience with an exclusive guided tour with the owner, Colleen Lowry, who will take you through the fascinating history of the house, gardens and Carriage and Costume museum. This beautiful, historic 550 acre Country Estate, nestled in the heart of woodlands, lakes and wildlife is the perfect retreat to end your lavish Lakelands experience.



Lavish Lakelands

Other Luxury Options:



[Belle Isle Estate](#) provides an outstanding mix of natural beauty and authentic heritage on a private 400 acre estate designated a Special Area of Conservation with a range of accommodation options including castle rental, luxury cottages and self-catering apartments.

Belle Isle has a rich history dating back to before the 15th century as the place where the Annals of Ulster were written. Belle Isle Castle was built in the early 17th century as the home to many generations of nobles and has been hosting events since as early as 1760. In 1991, the castle was fully refurbished to open its doors to more visitors. Belle Isle Estate stretches over 470-acres across Lisbellaw, County Fermanagh.



[Crom Castle](#)

Crom Castle West Wing, the stunning home of The 7th Earl and Countess of Erne, is a self contained accommodation venue specialising in Weddings, Weekly and Weekend breaks.

Situated in 1900 acres of beautiful National Trust parkland overlooking Lough Erne, the Wing prides itself on comfort and hospitality giving the feel of a home rather than a hotel or guest house. The accommodation sleeps twelve people in a mixture of twins and doubles all with ensuite bathrooms. Guests also have exclusive use of their own drawing room, bar, kitchen cum dining room, tv room and bootroom/cloakroom together with the surrounding private use of Viscount Crichton's gardens. The Victorian Conservatory leading off the West Wing is a fully licensed venue.



If you are looking for accommodation with a difference then your very own Castle will tick the box.



Lavish Lakelands

More Luxury Options:

[Finn Lough](#)

Sleep under the stars in your very own Bubble Dome. Designed with the surroundings in mind, each room is a nod to the nature beyond. Not just a place to rest your head but to inspire, restore and relax.

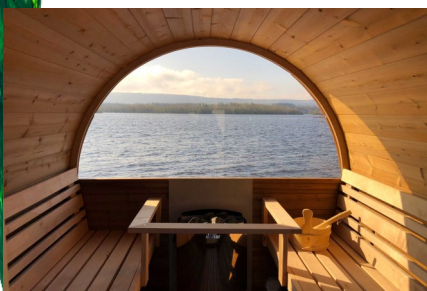
Finn lough Resort offers the most magical escape, stay, dine and relax at a resort like no other. Enjoy the Element's Spa Trail, unlike traditional spas, the self-guided experience offers a private two-hour trail flowing through a series of cabins nestled in the forest.



[Ross Harbour Resort](#)

Situated on 6 acres of land on the shores of Lower Lough Erne, Rossharbour offers a lakeside paradise and the most glamorous of glamping accommodation, each Luxury Lakeside Lodge comes with its own private Hot Tub overlooking beautiful Lough Erne.

The Harbour Restaurant and Buddy's Bar onsite means there is little need to leave this hidden retreat.





LOTS MORE OPTIONS TO HELP YOU PLAN YOUR VISIT

[Enniskillen Castle](#) Enniskillen, BT74 7ER, Tel: +44 (0) 28 6632 5000

[Lough Erne Resort](#) - Belleek Road, Enniskillen BT93 7ED, Tel: +44 (0) 28 6632 3230

[Belle Isle Estate](#) - 10 Belle Isle Demesne, Lisbellaw, Enniskillen BT94 5HG +44 (0) 28 6638 7231

[Crom Castle West Wing](#) - Newtownbutler, Co Fermanagh, BT92 8AP +44 (0) 28 6773 8004

[Boatyard Distillery](#) 346 Lough Shore Rd, Drumcrow Drumcrow East, Enniskillen BT93 7EY Tel: +44 (0) 78 1464 4070

[Enniskillen Taste Experience](#) Castle Barracks, Enniskillen BT74 7HL Tel: +44 (0) 77 3405 5452

[Enniskillen Water Activity Zone](#) Regal Pass Jetty, Shore Rd, Enniskillen BT74 7BL , Tel: +44 (0) 28 6641 9231

[Corralea Activity Centre Belcoo](#), Belcoo, Co. Fermanagh, BT935DZ Tel: +44 (0) 28 66 386 123

[Lusty Beg Island Activity Centre](#) Boa Island, Kesh BT93 8AD Tel: +44 (0) 28 6863 3300

[Marble Arch Caves](#) 43 Marlbank Road, Legnabrocky, Florencecourt, BT92 1EW Tel: +44 (0) 28 66321815

[Cuilcagh Boardwalk](#), Contact Marble Arch Caves for details.

[Headhunters Barber Shop & Railway Museum](#) - 5 Darling Street, Enniskillen, BT74 7DP Tel: +44 (0) 28 6632 7488

[Share Discovery Village](#) - 221 Lisnaskea Road, Lisnaskea, BT92 0JZ, Tel: +44 (0) 28 6772 2122

FOR ALTERNATIVE ITINERARIES OR IF YOU REQUIRE ASSISTANCE WITH PLANNING YOUR VISIT TO FERMANAGH PLEASE GET IN TOUCH, WE WOULD BE DELIGHTED TO ASSIST:

Fermanagh Lakeland Tourism

Enniskillen Castle, Enniskillen, Co.Fermanagh, Northern Ireland BT74 7HL

T: +44 (0) 28 66 346736

W: fermanaghlakelands.com

E: info@fermanaghlakelands.com